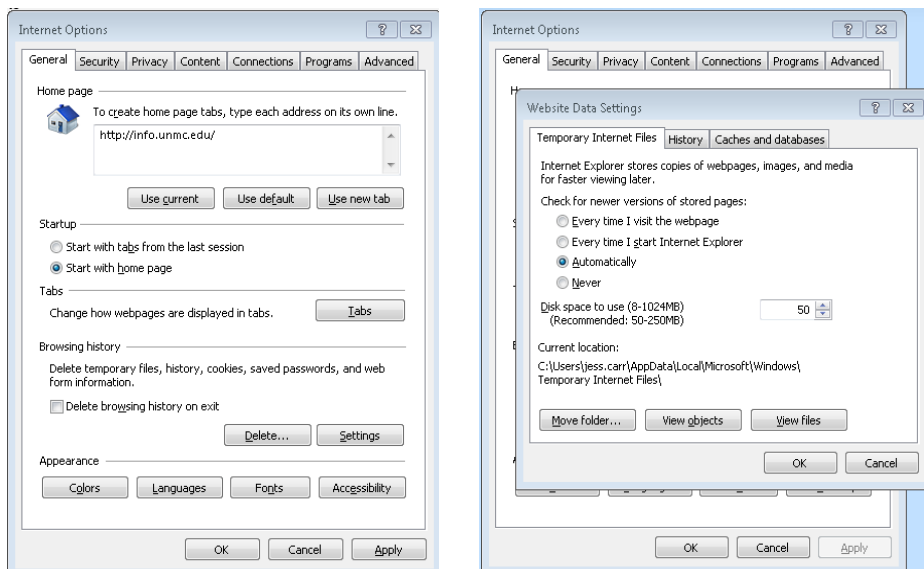
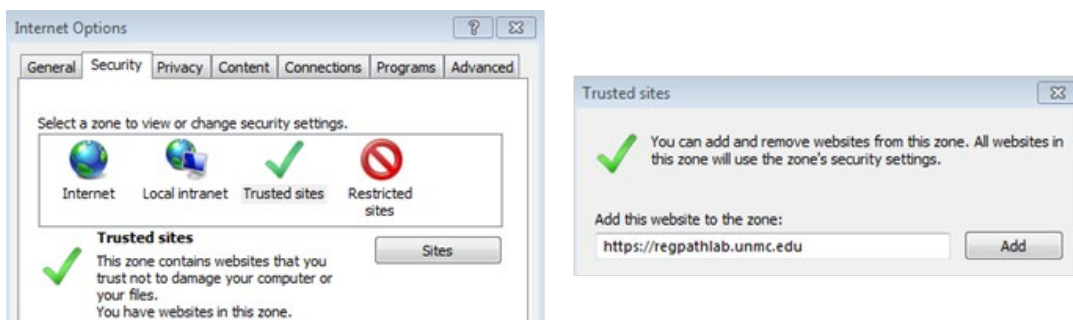


RPS Pathway is a web-based program which can be accessed via Internet Explorer or Firefox.

- A. For best performance, reconfigure the following Internet Explorer settings:
1. Edit Browsing History
 - i. Go to Tools > Internet Options. Within the General tab, under Browsing History select Settings.
 - ii. Make the following changes if needed:
 1. Check for newer versions of stored pages: Automatically.
 2. Disk space to use: 50 MB (or less).
 - iii. Click OK to save these settings.
 - iv. Go back to the General tab, Browsing History select Delete and Delete again.
 - v. Click Apply to save and apply your changes.

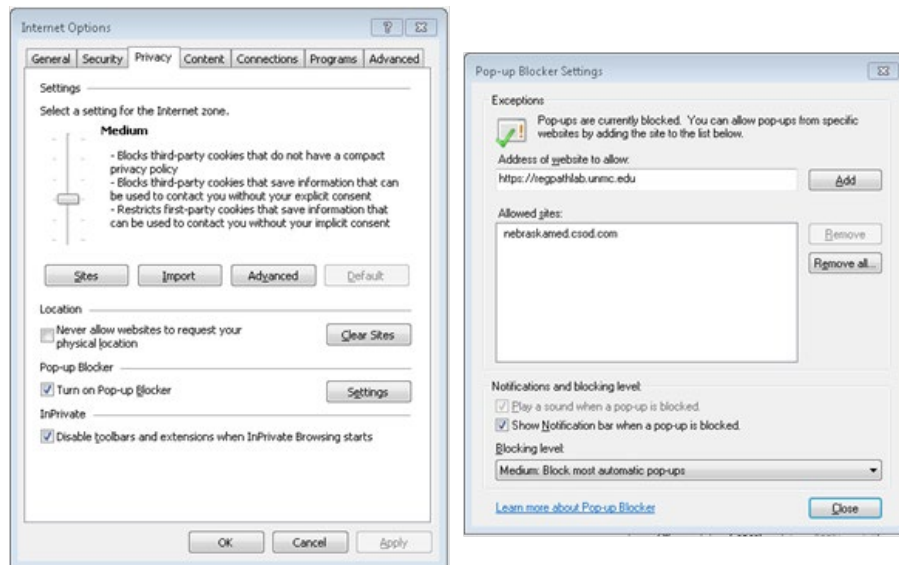


2. Make LabWorks (RPS Pathway) a trusted site
 - i. Go to Tools > Internet Options. Within the Security tab, click on the Trusted Sites icon.
 - ii. Click on Sites and follow the dialog that appears.
 - iii. Type the following URL into the “add this website to the zone: field:
<https://regpathlab.unmc.edu>
 - iv. Click the Add button, followed by Close and then Apply to save and apply your changes.



3. Bypass Pop-Up Blockers

- i. Go to Tools > Internet Options
- ii. Within the Privacy tab, under Pop-up Blocker select Settings.
- iii. Type the following URL into the “address of website to allow” field:
<https://regpathlab.unmc.edu>
- iv. Click the Add button, followed by Close and then Apply to save and apply your changes.



4. Remove any search engine toolbars from Internet Explorer

- i. Go to the Start Menu
- ii. Select Control Panel
- iii. Select Programs and Features
- iv. Scroll through the list until you find any Google, Yahoo or MSN toolbar programs.
- v. Highlight each individual program and click Uninstall in the top tool bar.